

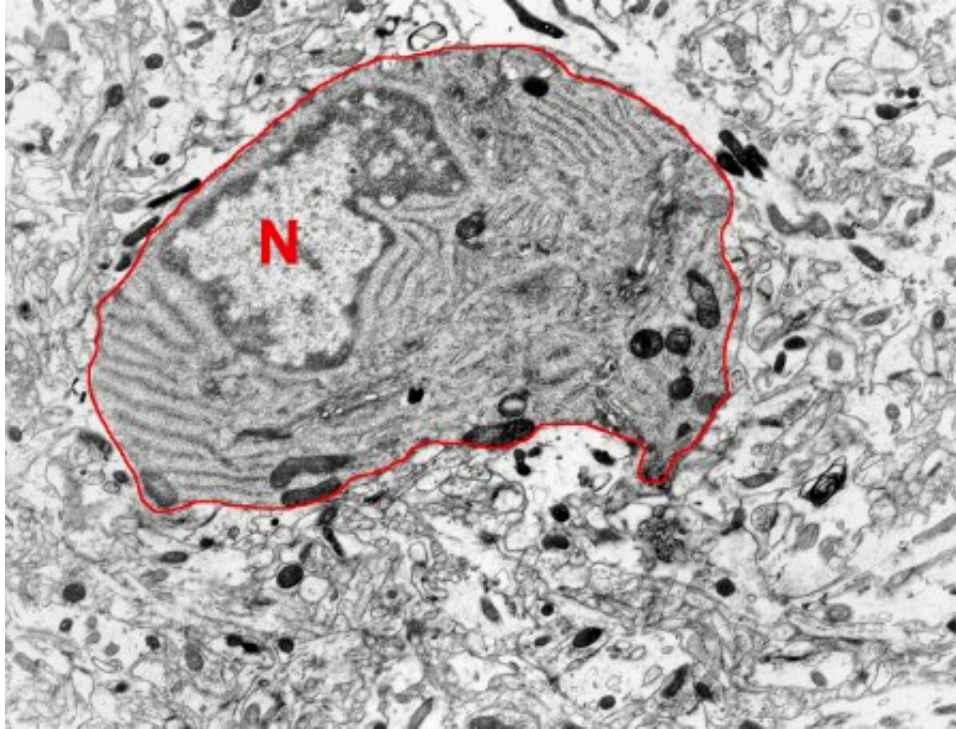


# Synapse Web

About | Anatomy | Links | Publications | Search | Tools

[Cell types in s. radiatum...](#)

by [Josef Spacek](#)



**Oligodendrocyte ([enlargement 791K](#))**

The cell is outlined in red. The nucleus of the cell is labeled with the letter N.

*Last Updated: 11/3/99*